

Cisco 4400 Series Wireless LAN Controller (WLC) with Aironet 1100/1200 Series APs
 Configuration and Deployment Guide

Voice-over-WiFi



SpectraLink's Voice Interoperability for Enterprise Wireless (VIEW) Certification Program is designed to ensure interoperability and high performance between NetLink Wireless Telephones and WLAN infrastructure products. The products listed below have been thoroughly tested in SpectraLink labs and have obtained VIEW Certification. This document details how to configure the Cisco 4400 series WLC and Aironet 1100/1200 Series APs with NetLink Wireless Telephones.

Certified Product Summary

Manufacturer:	Cisco Systems: www.cisco.com
Approved products:	4400 series WLC with AP 1131f and LWAPP-capable 1200 series APs
RF technology:	
Radio:	
Security:	
AP and WLC software version tested:	
NetLink Wireless Telephone software version tested:	
Maximum active telephone calls per AP:	

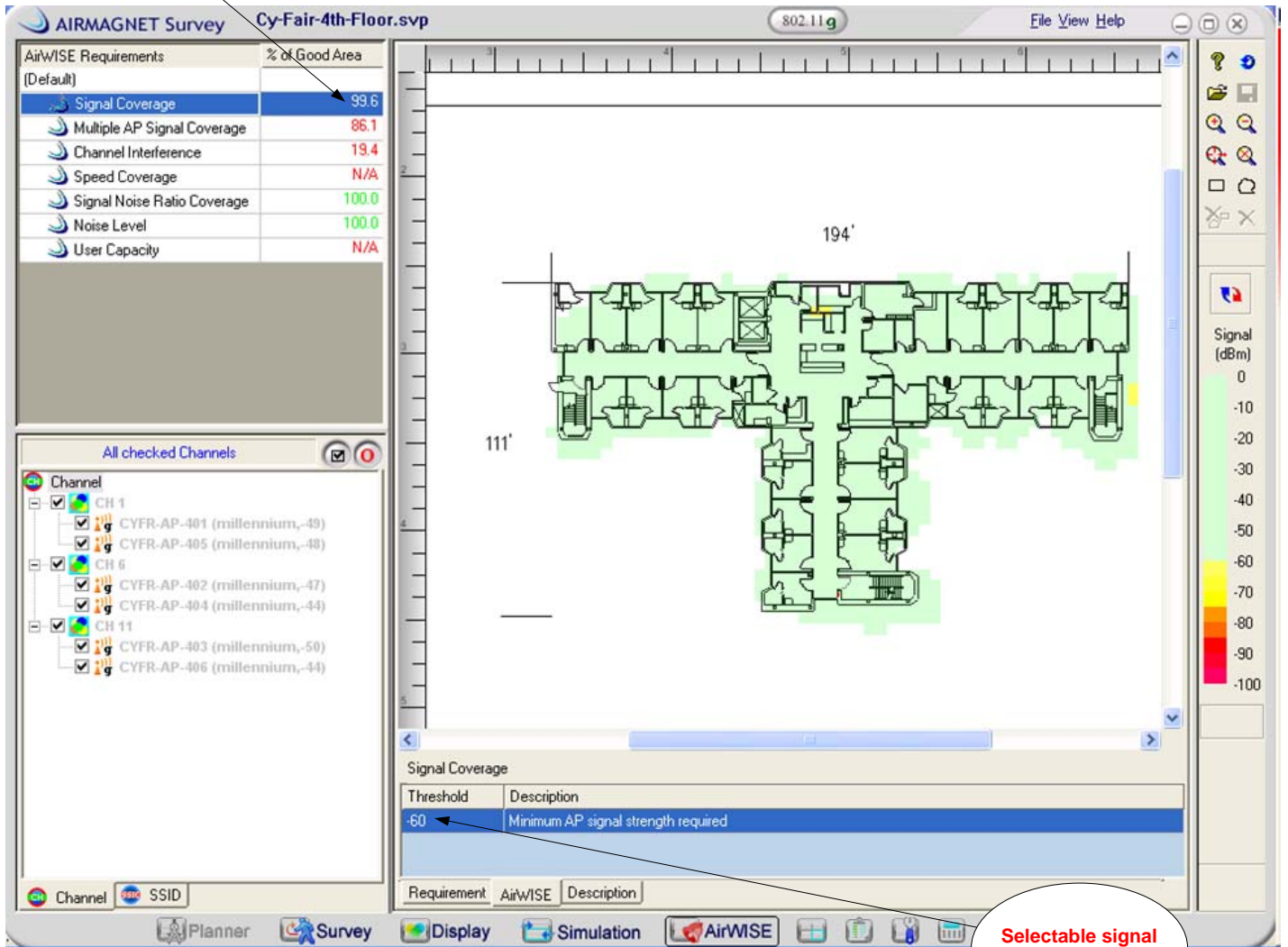
Recommended Environment for NetLink Telephones

This section describes the environment that is necessary for a successful voice deployment.

Note: These suggestions change when you use the deployed network for both data and voice. As the SpectraLink Site Survey Recommendations section mentions, SpectraLink recommends a cell of -70 dBm. However, -60 dBm are necessary in order to support an 11-Mbps cell.

% of floor meeting minimum signal strength requirement

Minimum required signal strength measured at device



Selectable signal strength threshold